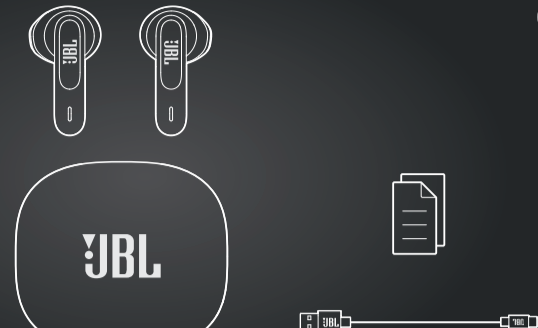


# QUICK START GUIDE

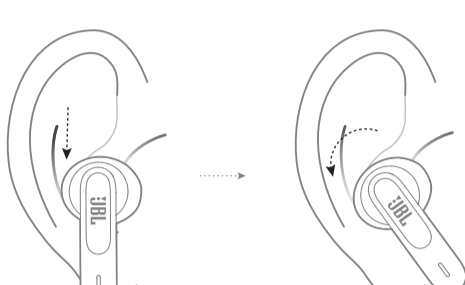
VIBE300TWS



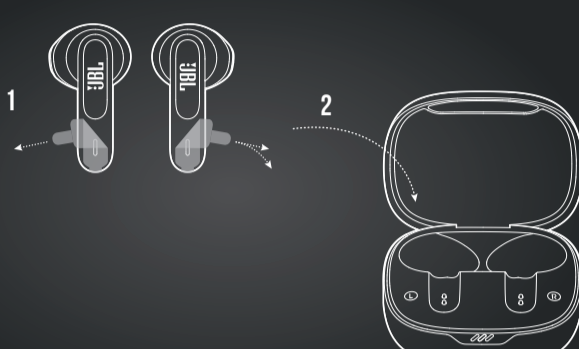
## WHAT'S IN THE BOX



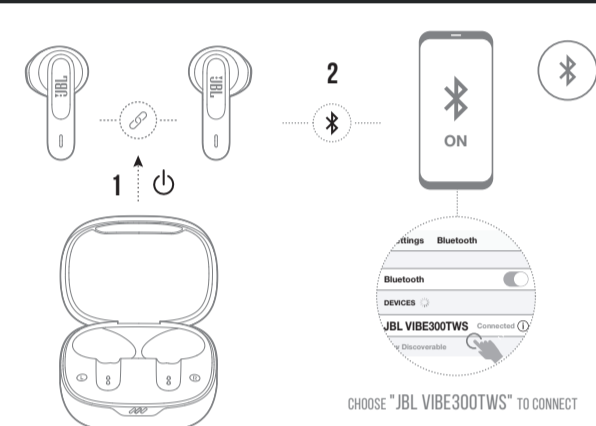
## HOW TO WEAR



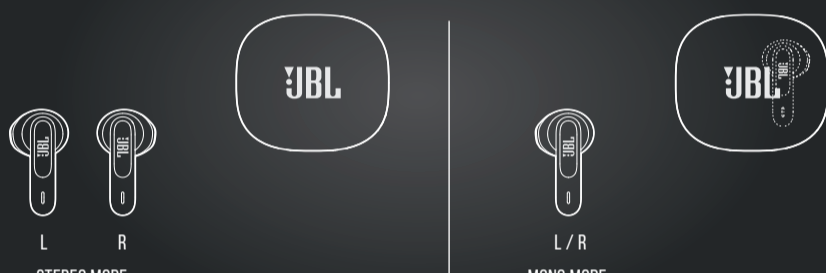
## FIRST TIME USE



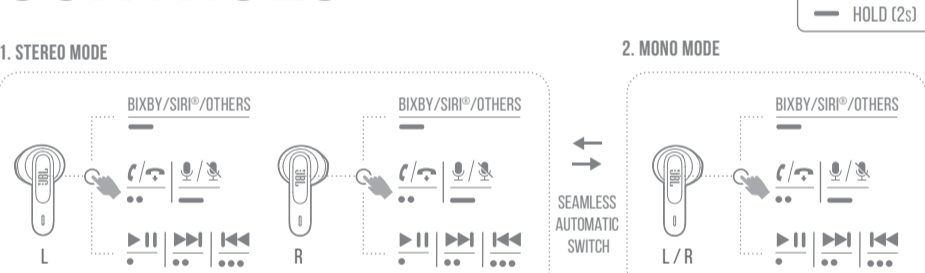
## POWER ON & CONNECT



## DUAL CONNECT



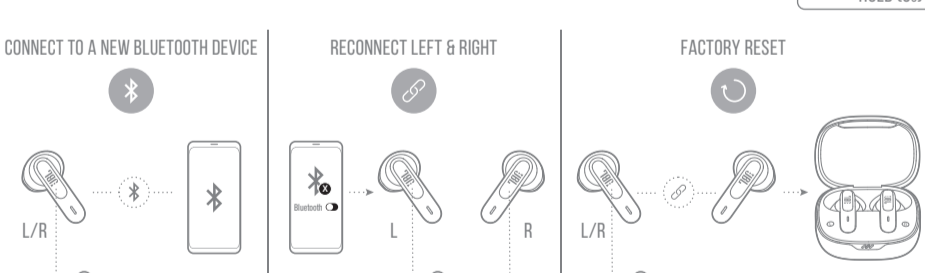
## CONTROLS



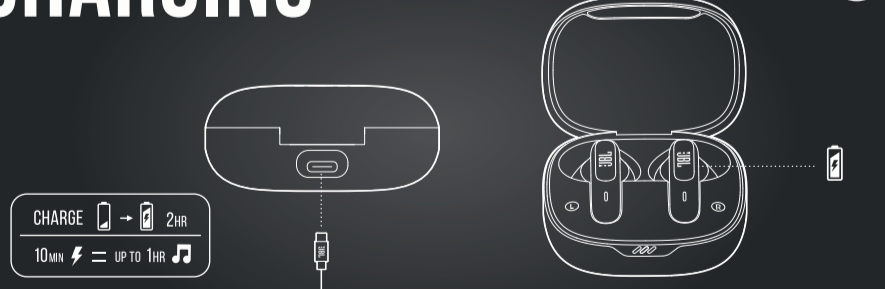
## POWER OFF



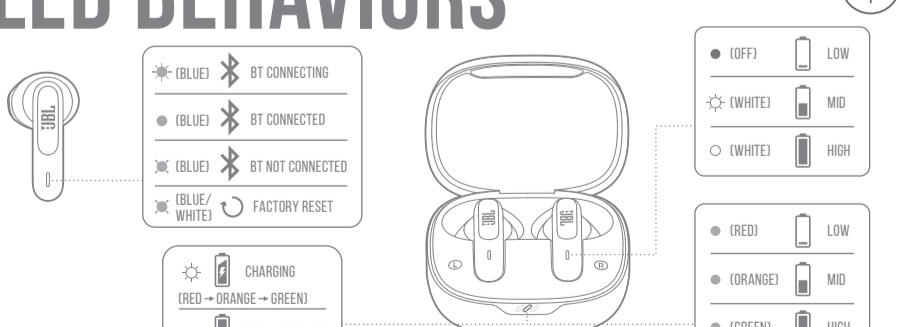
## MANUAL SETUP



## CHARGING



## LED BEHAVIORS



## TECH SPEC

**Model:** VIBE300TWS  
**Driver size:** 12 mm / 0.47" Dynamic Driver  
**Power supply:** 5V = 1A  
**Earbud:** 3.85 g per pc (7.7 g combined) / 0.009 lbs per pc (0.017 lbs combined)  
**Charging case:** 36 g / 0.079 lbs  
**Earbud battery type:** Lithium-ion polymer (40 mAh / 3.85 V)  
**Charging case battery type:** Lithium-ion polymer (500 mAh / 3.8 V)  
**Charging time:** < 2 hrs from empty  
**Music playtime with BT on:** up to 6 hrs  
**Frequency response:** 20 Hz – 20 kHz  
**Impedance:** 32 ohm  
**Sensitivity:** 105 dB SPL @ 1 kHz  
**Maximum SPL:** 95 dB  
**Microphone sensitivity:** -38±2 dBV/Pa @ 1 kHz  
**Bluetooth version:** 5.2  
**Bluetooth profile:** A2DP V1.3 AVRCP V1.6 HFP V1.7  
**Bluetooth transmitter frequency range:** 2.4 GHz - 2.4835 GHz  
**Bluetooth transmitter power:** < 12 dBm  
**Bluetooth transmitter modulation:** GFSK, π/4-DQPSK, 8-DPSK  
**Maximum operation temperature:** 45 °C

